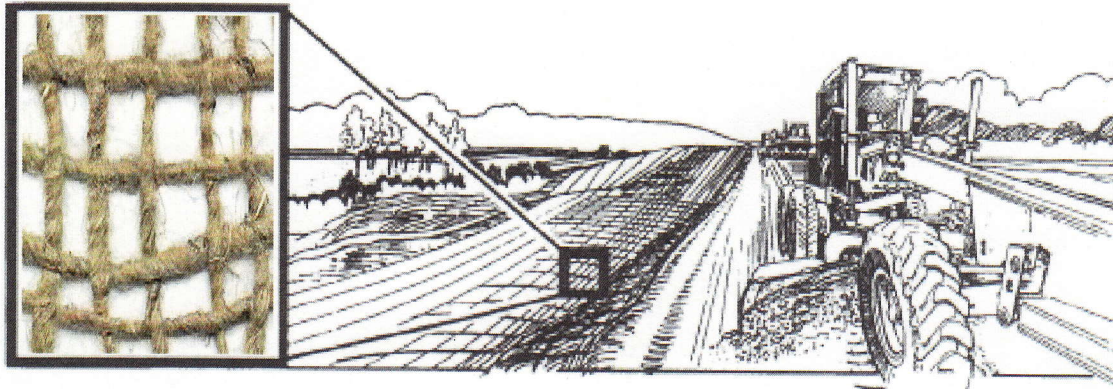
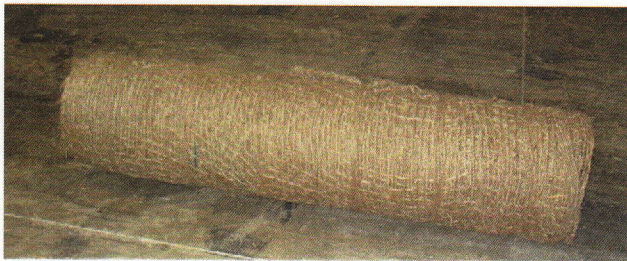


Heavy Jute Matting

The Natural way to prevent erosion.



For soil stabilization, reclamation and erosion control. **Heavy Jute Matting** is the natural effective way to stop erosion during the critical early establishment of vegetation along waterways, median strips and embankments. Because Jute is a vegetable, this matting enriches the soil as it decomposes, adding valuable nutrients that keep on feeding the grass or plants after establishment. Jute slows water runoff by absorbing 5 times its weight in water.



- Accepts seeding before or after installation of fabric
- Plantings can be made through the fabric
- Absorbes 5 times its weight in water
- Easy to use on any terrain



Waterway Installation:

1. Always lay Jute in the direction of water flow.
2. Use extra staples and make sure they are driven flush with the soil surface.
3. Check slots should be placed every 25' to 50' depending on water velocity.
 - Dig 6" deep trench perpendicular to water flow.
 - Roll Jute in 2 or 3 folds and set into trench.
 - Staple fabric securely in bottom of trench and continue rolling down hill.
4. Do not over stretch the Jute, lay it loosely.

Specifications

Yarn - Woven Jute
 Roll Width - 48"
 Roll Length - 225'
 Roll Weight - 92 lbs. (Dry)
 Yarn Count - Warp - 78 per width, minimum
 - Weft - 42 per linear yard, minimum
 Mass Unit Area - ASTM D-3776 - 14.7 oz./sy
 Grab Tensile - ASTM D-4632
 - Dry Warp - 300 lbs./foot
 - Wet Fill - 175 lbs./foot
 Elongation % - ASTM D-4632
 - Warp 10%
 - Fill 10%
 Open Area - C.O.E. CW002215 - 60%
 Durability - Field Experience 1-2 years
 Water Velocity - University Channel Test - 8 ft./sec
 Unit Sheer - University Flume Test - 2.76 lbs./sq.ft.

